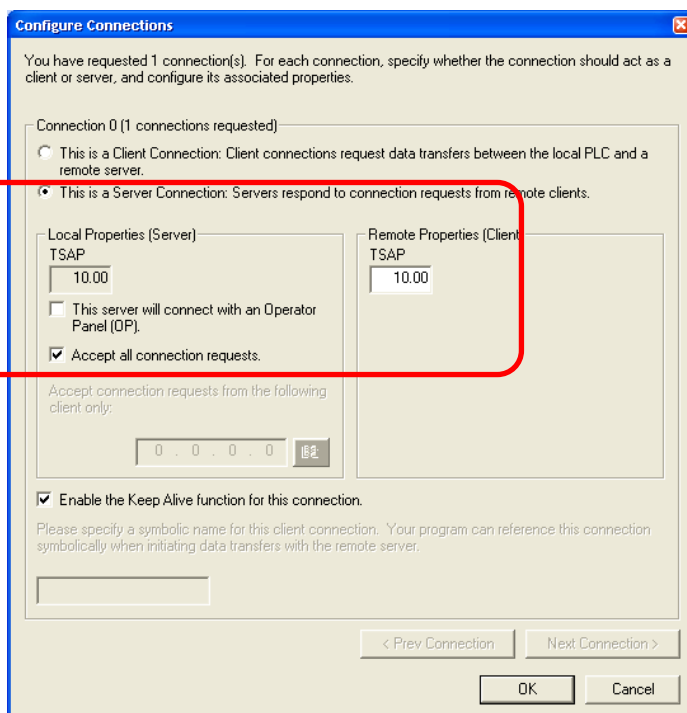
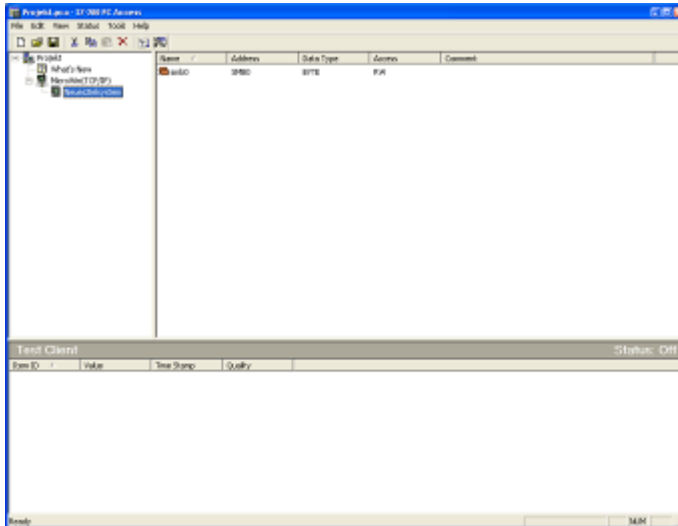


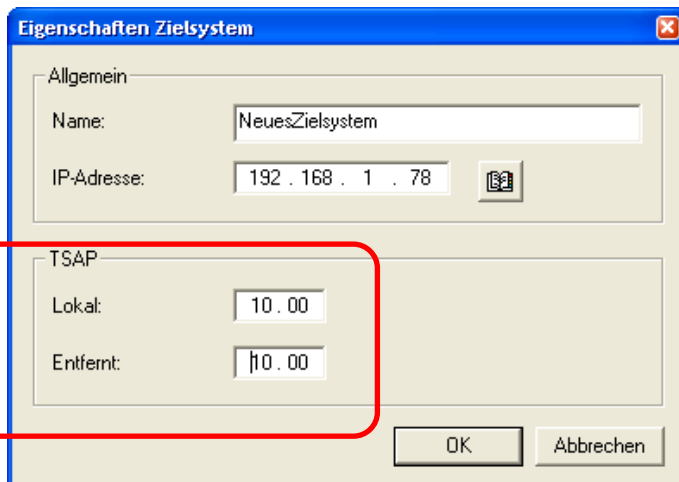
Configure a connection for the CP243-1 IT by using the wizard.



Specify a Server connection and enable „Accept all connection requests“ (This can be changed in case of additional security requests)



Open your PC-Access project, select the PLC, press the right mouse button and select the properties.



Check the IP-Address and enter the TSAP you get during the wizard configuration for the connection.

Save the project and connect. It should work now.